

20
33



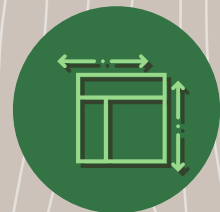
Find Your Fit

Up to 100,000 SF Available

2033

Ease Into The Advantages

2033 K Street offers flexibility and convenience for all the ways people work.



Bright/Slender
Floor Plans



Debt Free



Brand-New
Amenities



High Quality
Renovations



On-Site
Restaurant & Bar



Walk
Score: 98



Bike
Score: 69



LEED-Gold EB
Certified



BRAND-NEW ENTRANCE



ON-SITE RESTAURANT & BAR



BRAND-NEW ELEVATORS
& MECHANICAL SYSTEMS



BRAND-NEW LOBBY



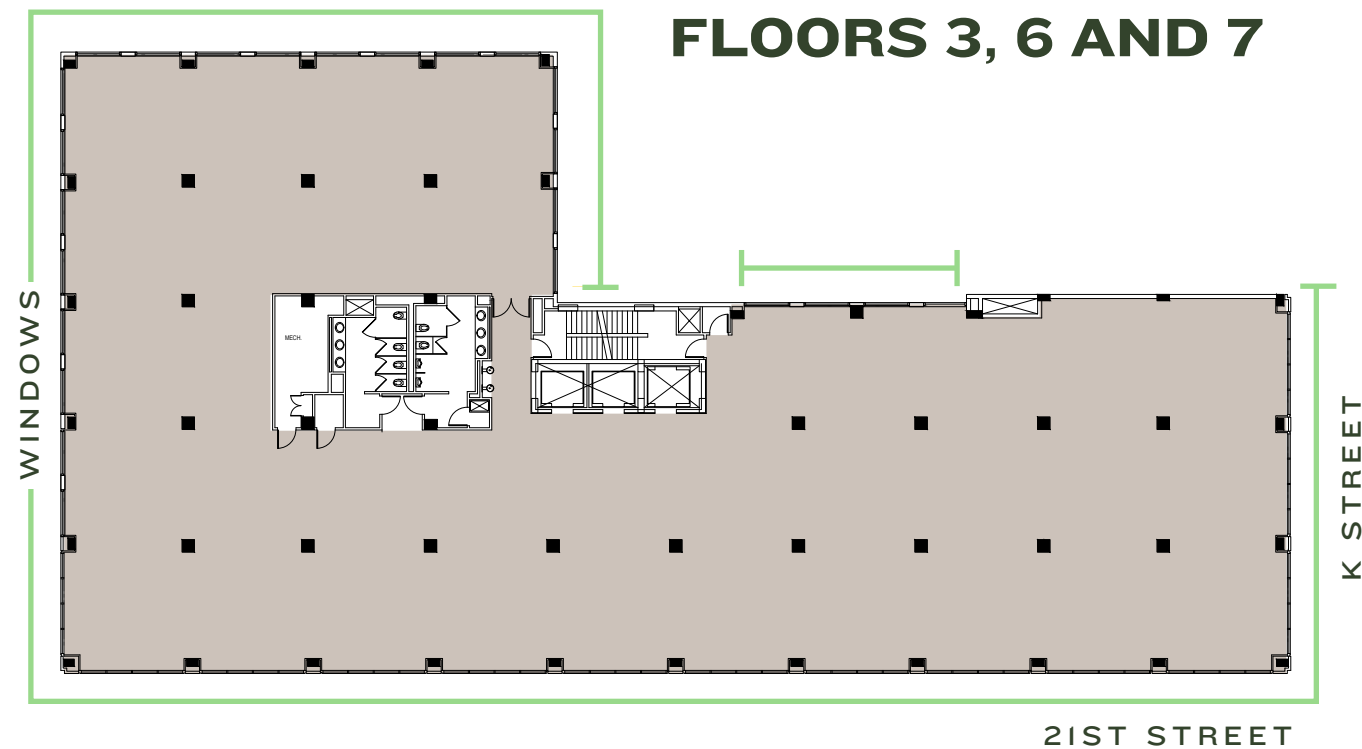
BRAND-NEW CONFERENCE CENTER & LOUNGE

Find Your Fit

From spec suites to large blocks, 2033 K Street offers the opportunity to provide a custom fit for almost any user.

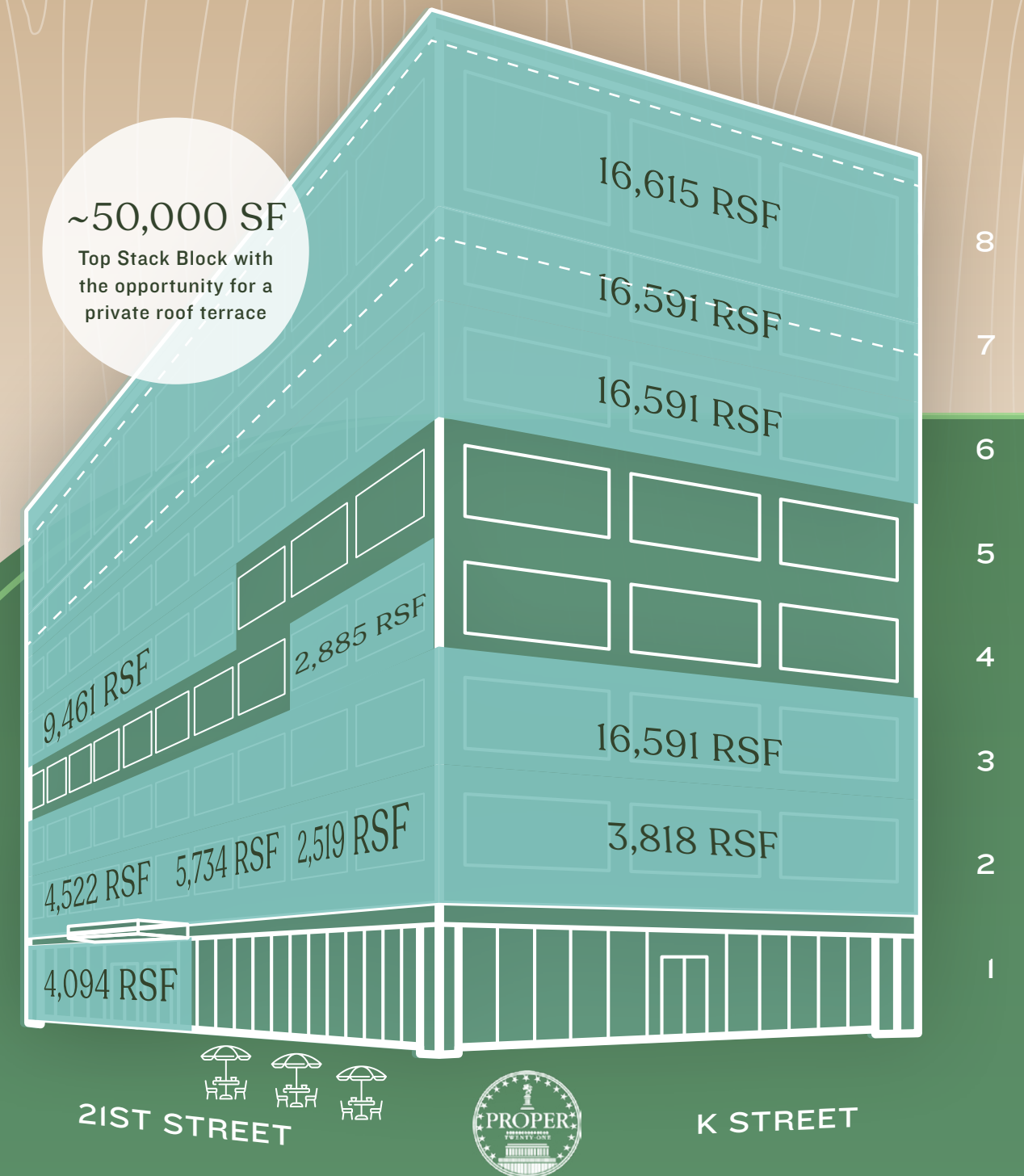


TYPICAL FLOOR PLAN / 16,591 RSF



Availabilities

2033 K Street's slender and efficient floor plates allow for maximum flexibility from a 2,500 sf spec suite up to 100,000 sf large block and offer stunning views of the surrounding cityscape.



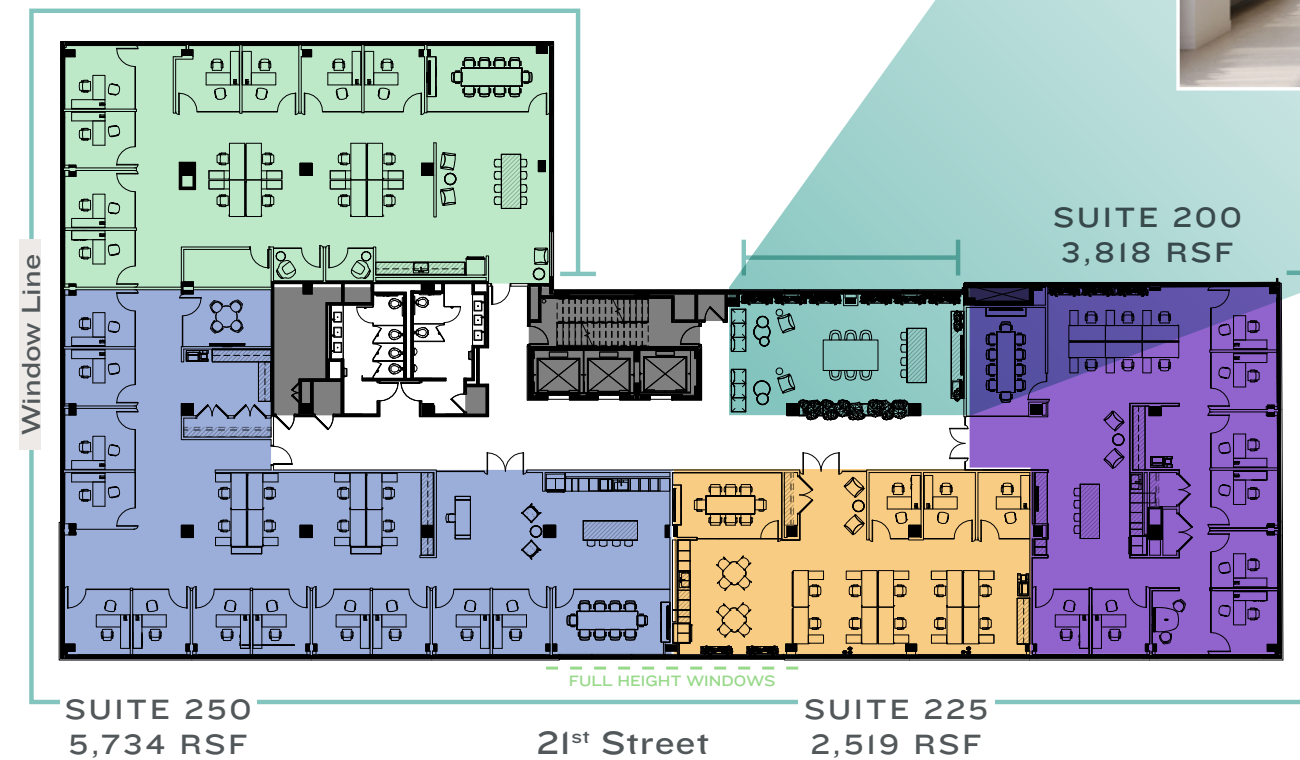
Available Space



2ND FLOOR / ~16,593 RSF

4 Incredible, Amenitized Spec Suites Coming Soon!

SUITE 275
4,522 RSF



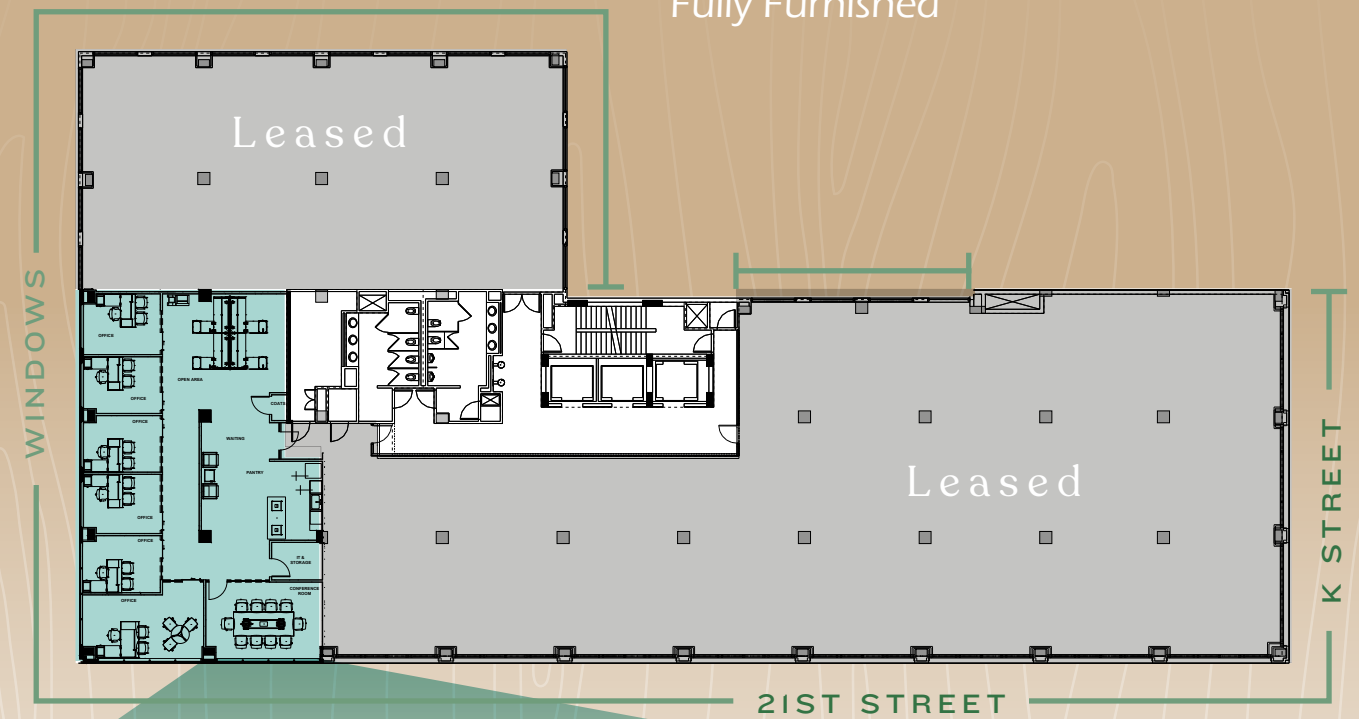


Fit Into
Your Future.



SPEC SUITE 450 / 2,885 RSF

Fully Furnished





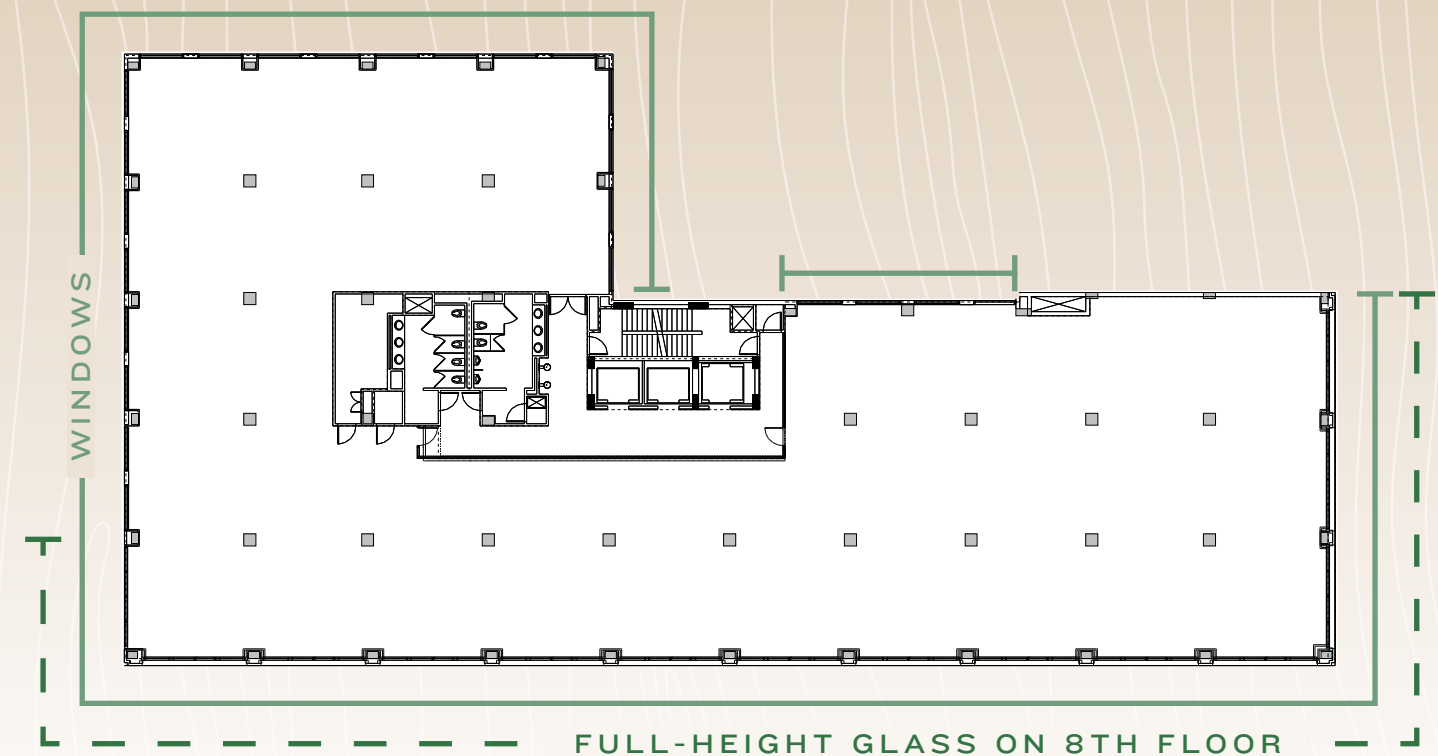
5TH FLOOR

5TH FLOOR / ~9,461 RSF



8TH FLOOR

8TH FLOOR / ~16,615 RSF



Top Floor Features 12'6" Clear Height
& Full-Height Glass Along 21st & K Streets

Engage With Life

Modern workplaces have to offer more than just a space to work. They need to fit into the broader, active lifestyle that employees want – one that's centered around connection and engagement.



2033 K Street offers all that and more. The refreshed streetscape and sleek new lobby greet tenants and guests while the new tenant lounge and conference center provide flexible space and the latest tech to host hybrid or in-person meetings. Plus, the new tenant-only fitness center with spa-quality locker rooms and showers features Peloton, Nautilus and LifeFitness equipment.

Stay active. Stay fit. Stay in the game at 2033 K Street.





Embrace the New Environment

2033 K Street's newly renovated spaces include some of the most in-demand amenities that get people excited about coming back to the office:


- Secure bike storage
- Fitness center with Peloton + more
- Spa-quality locker rooms with showers
- Spacious conference center for 70 people
- Comfortable tenant lounge
- Sleek, modern lobby






Connect With the Community

With so many nearby amenities, you'll wonder why you ever worked anywhere else! The neighborhood boasts a Walk Score of 98 and more than 550 of DC's best restaurants, shops, bars, and parks nearby.

 Capital Bikeshare

 Circulator Bus Stop

PENNSYLVANIA AVE NW



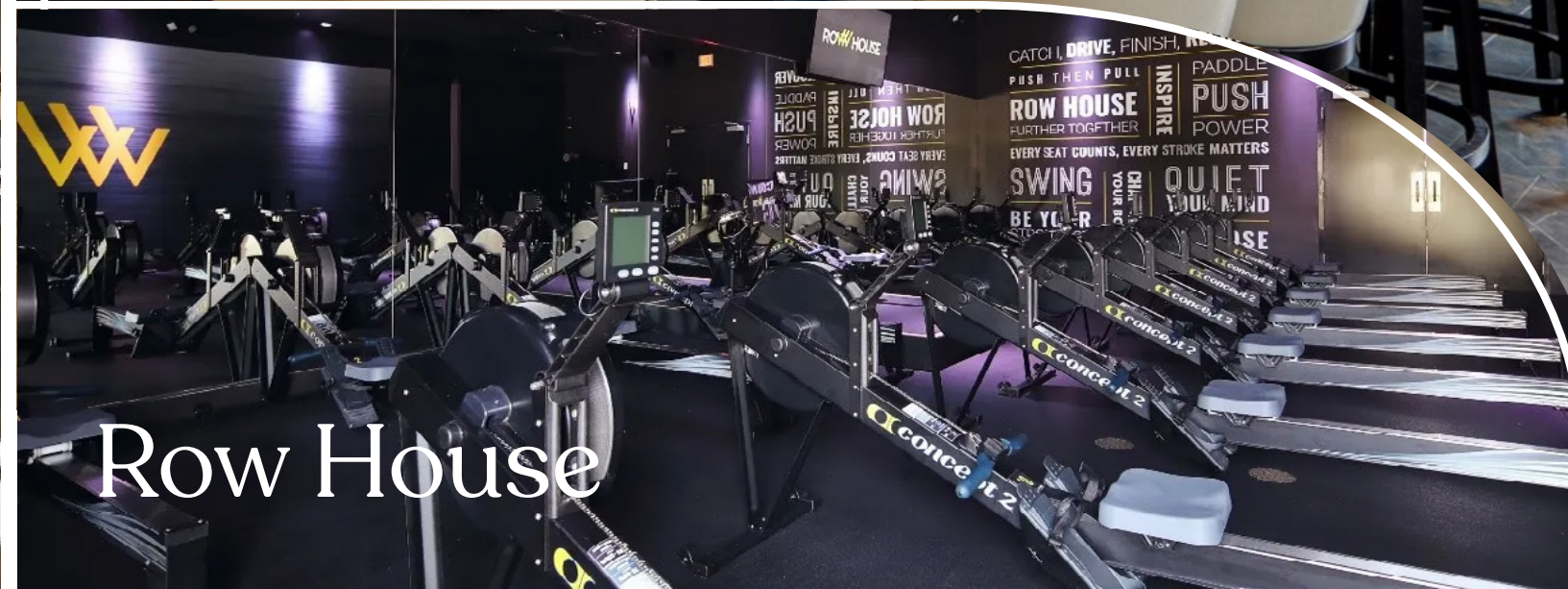
For Five Coffee



Proper 21



Ruth's Chris Steakhouse



Row House

20
33



Find Your Fit

Up to 100,000 SF Available

Laurie McMahon | Phil Dickinson | James Collins | Ellison Cook | 202.463.2100

